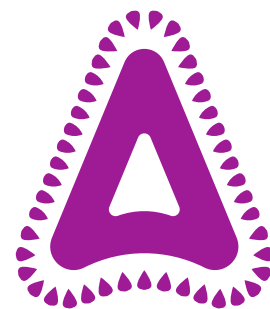


Taurus® Trio G

Three-way granular insecticide



Powered by **three active ingredients**, Taurus® Trio G from Controls Solutions and Quali-Pro, brings you the **latest** and most powerful insecticide when it comes to residual ant control. For the first time ever, **three different active ingredients**, Fipronil, Bifenthrin, and Lambda Cyhalothrin, have been combined in one uniform granule to deliver **fast** and **long-lasting** fire ant control. No other insecticide granule combines two unique modes of action to maximize results in a **single application**.

Taurus Trio G Specifications:

- Active Ingredients:
 - Fipronil - 0.0143%
 - Bifenthrin - 0.23%
 - Lambda Cyhalothrin - 0.059%
- Formulation: Granule with Verge Technology
- Chemical Classes: Fiprole and Pyrethroid
- Signal Word: Caution (Restricted Use)

The Benefits of Verge® Granule Technology

The durable outer core of the Verge Granule prevents tiny fragments from breaking off, unlike traditional carriers, therefore there is significant dust reduction. In addition, millions of micro-pores allow for multiple active ingredients to be applied, with excellent holding capacity.

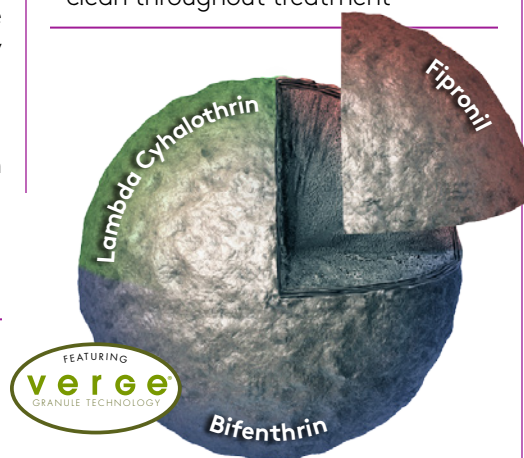
Taurus Trio G Benefits:

- Verge® Technology granule ensures uniform distribution and coverage
- Caution Signal Word and Minimal PPE (Restricted Use Product)
- Two Unique Modes of Action: GABA Inhibitor and Sodium Channel Blocker
- Up to a year Fire Ant control in a single application

Low application rate:

Amount of TTG	Coverage Area
87 lbs.	Acre
2 lbs.	1000 sq. ft.
3.2 oz.	100 sq. ft.

- Controls mole crickets, fleas, ticks and other nuisance ants in areas treated by Taurus Trio G
- Can be easily applied by broadcast or drop spreaders
- No-dust formula keeps applicators clean throughout treatment



When watered in, those same pores break into millions of tiny fragments, ensuring good coverage and release of the insecticide.



Taurus Trio G Profile

- 30 pounds per bag
- Heavy-duty, resealable bags
- Stackable bags are one way vented—letting air out, when stacked, but will not expose the granule to moisture or atmosphere
- 140 SGN

Insects Controlled

- Imported Fire Ants



Also Controls

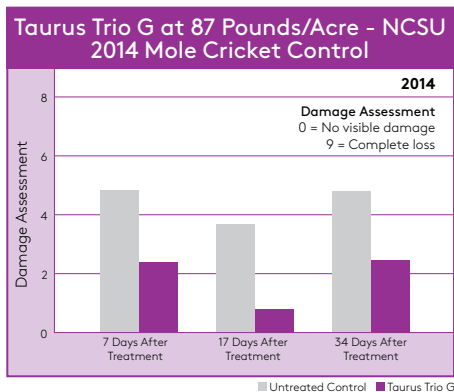
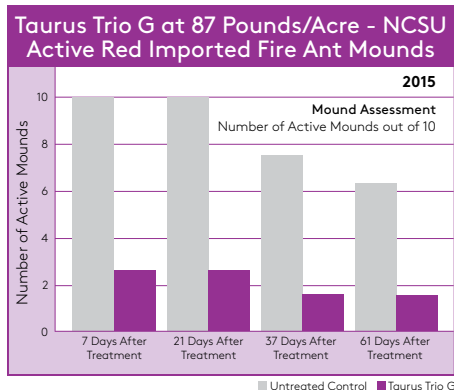
- Nuisance Ants
- Mole Crickets
- Fleas
- Ticks



Taurus® Trio G

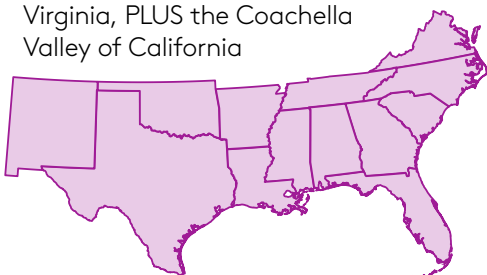
Efficacy Summary

Taurus Trio G has been approved for broadcast use on golf courses, as well as residential and commercial turf and landscapes. Recreational areas, such as schools, sports fields, parks and campsites can also benefit from annual applications of Taurus Trio G. Mound, perimeter and boundary applications are also very effective treatment methods. The three-way combination provided by Taurus Trio G has been university tested, and proven to provide faster knockdown and longer residual than competitive granules. Finally, following an application for Taurus Trio G for fire ants, there has been a significant reduction in both fleas and ticks for multiple weeks when these pests are present.



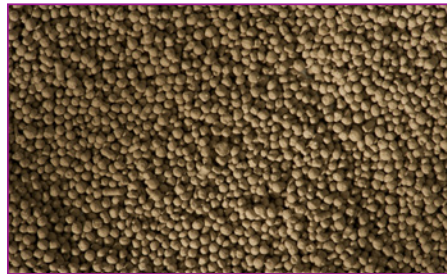
Taurus Trio G Distribution Area

Alabama, Arkansas, Florida, Georgia, Louisiana, Mississippi, New Mexico, North Carolina, Oklahoma, South Carolina, Tennessee, Texas and Virginia, PLUS the Coachella Valley of California



QUALI-PRO

Innovation you can apply.



Uniform Applications

Taurus Trio G is carried on a technologically advanced carrier: 140 SGN Verge. Its uniform size, shape, and density make it easy to spread while still providing great coverage and dispersion.



Cleaner Applications

These photos demonstrate how Taurus Trio G is less dusty than other granules. Which keeps active ingredients where you intend and keeps you, your staff and your equipment cleaner.

Spreader Settings

Spreader settings are approximate and can vary with ground speed, pattern, adjustments, wear, and changes in the manufacturing of the equipment. Therefore, you should ALWAYS

calibrate your spreader before applying any product.

SPREADER (at 2 lbs. per 1000 sq.ft.)	Ground Speed	Swath Width	Setting
Lesco® 091186	3 mph	8 ft.	9.9
Earthway® EV-N-SPRED® (Drop)	3 mph	1.75 ft.	12.6
Earthway® EV-N-SPRED® (Rotary)	3 mph	7.3 ft.	14.2
Andersons® AccuPro 2000	3 mph	10.7 ft.	J



Simplified Applications

Timing: Taurus Trio G can be applied any time of year as long as the soil temperature is above 55° F.

Irrigation: Taurus Trio G must be watered in either by rainfall or light irrigation (generally 1/4") following application.